

SOFTWARE AQUA REDE

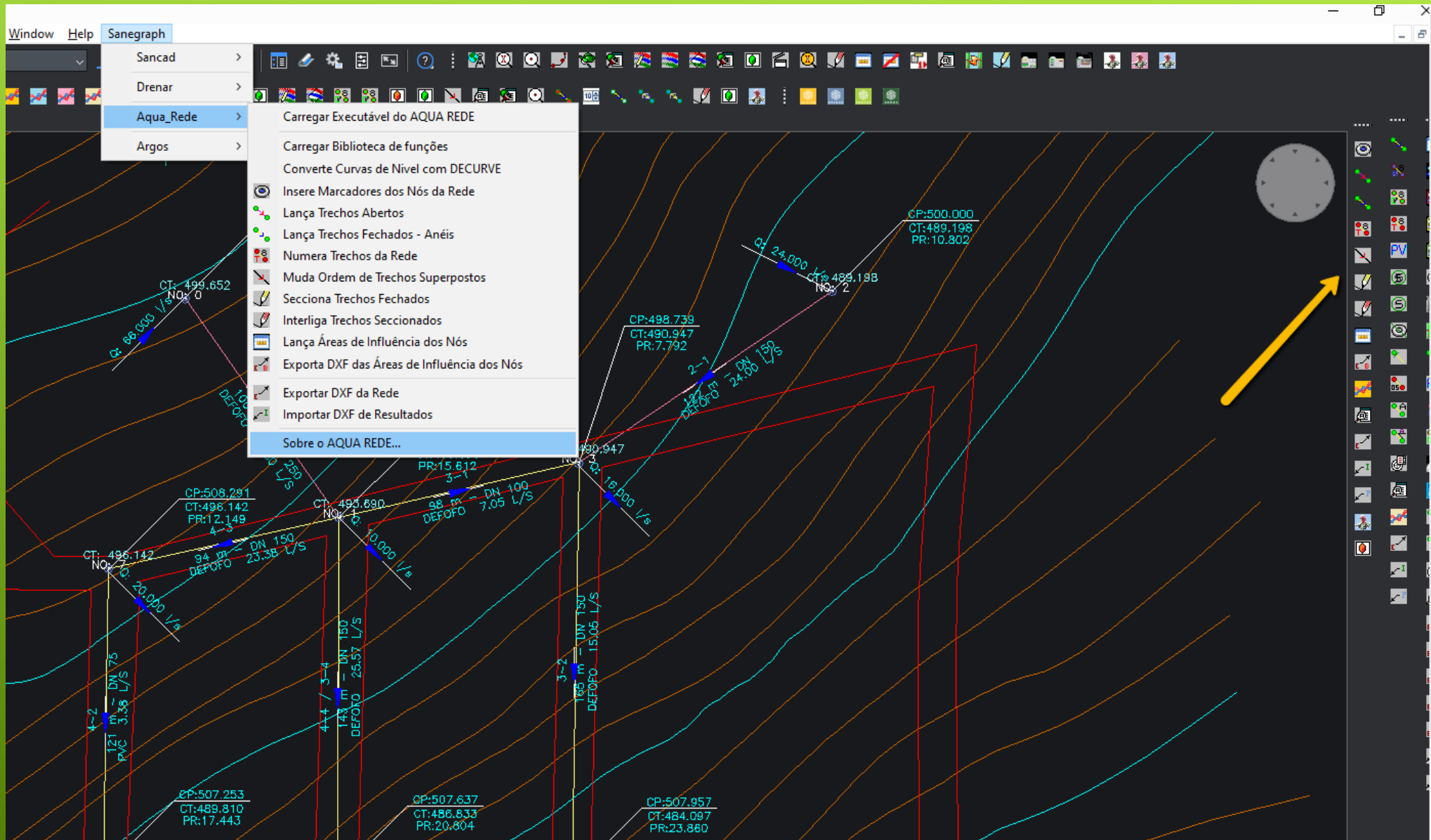
BY SANEGRAPH LTDA.

Funcionamento esquemático do software

www.sanegraph.com.br

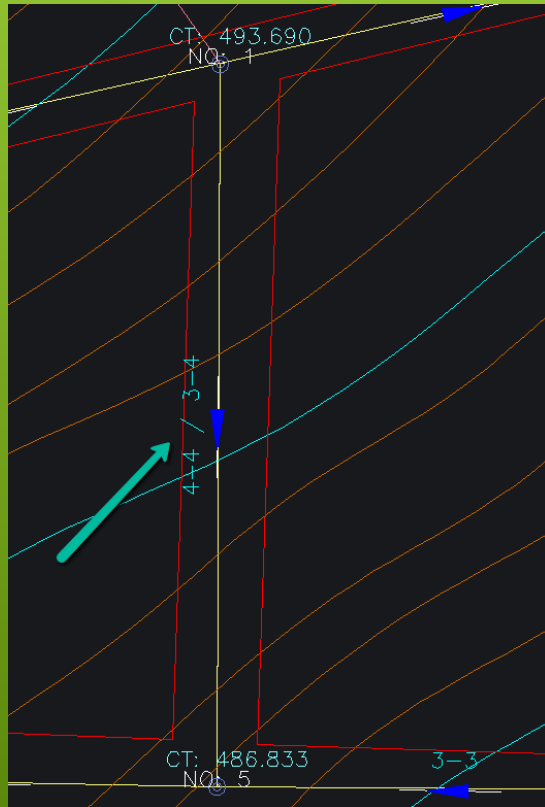
Distribuição de água

Customização do CAD – menu superior e barra de ferramenta (Interface do usuário)

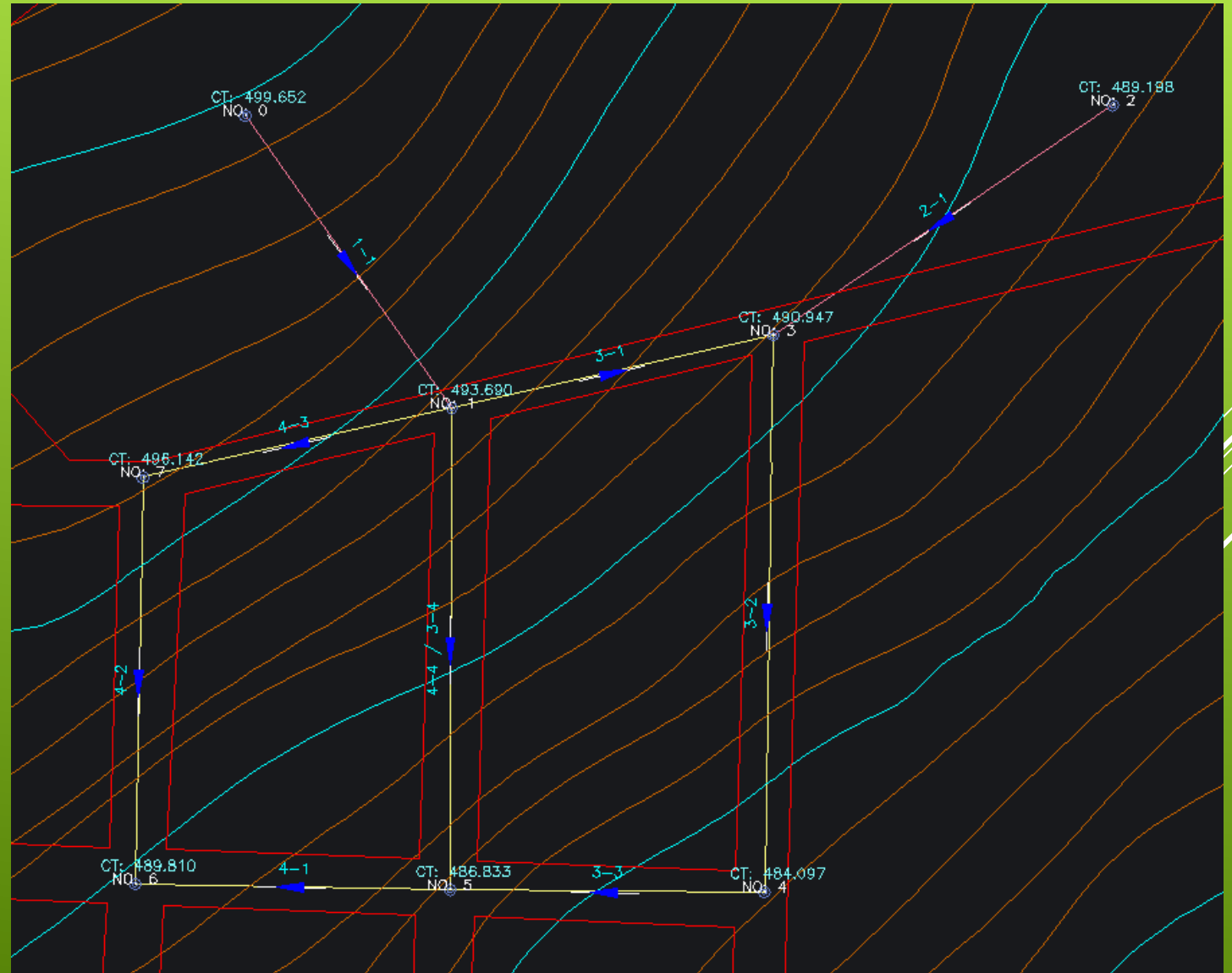


Ambiente gráfico em CAD – lançamento das estruturas

- Nós cotados da rede (marcadores)
- Trechos abertos e fechados
- Numeração da rede



Detalhe do trecho comum a mais de um anel da rede



Ambiente de cálculo

SISTEMA AQUA REDE - PLANILHA DE DADOS FINAIS

03/03/2021

C:\PROJETOS\AQUA\LEO07\ÁGUA AURORA 4.DBF

Anel	Trecho	Comp (m)	Nós dos Trechos			Diâmetros		Vazão (l/s)	Veloc (m/s)	Perda de Carga		Fixa	Cotas de Terreno		Pressão Dinâmica		Pressão Estática		Obs
			Montante	Jusante	Projeto	Exist 1	Exist 2			(mca)	(m/km)		Montante	Jusante	Montante	Jusante	Montante	Jusante	
1	1	283.00	0	1	150	0	0	28.920	1.51	4.752	16.790		528.962	522.367	19.04	20.88	19.04	25.61	
2	1	13.00	1	2	150	0	0	27.370	1.43	0.197	15.150		522.367	521.757	20.88	21.30	25.61	26.22	
2	2	86.00	2	3	150	0	0	25.250	1.32	1.123	13.060		521.757	518.359	21.30	23.57	26.22	29.61	
2	3	42.00	3	4	150	0	0	22.900	1.20	0.458	10.900		518.359	516.743	23.57	24.73	29.61	31.22	
2	4	19.00	4	5	100	0	0	17.890	1.95	0.785	41.340		516.743	516.147	24.73	24.54	31.22	31.82	
2	5	55.00	5	6	100	0	0	7.260	0.79	0.428	7.780		516.147	514.494	24.54	25.76	31.82	33.47	
2	6	18.00	6	7	75	0	0	3.350	0.72	0.162	8.990		514.494	514.682	25.76	25.41	33.47	33.28	
2	7	103.00	7	8	50	0	0	1.640	0.69	1.276	12.390		514.682	515.000	25.41	23.82	33.28	32.95	
2	8	17.00	8	9	50	0	0	2.640	1.11	0.506	29.790		515.000	514.799	23.82	23.51	32.95	33.15	
2	9	10.00	9	10	50	0	0	1.600	0.67	0.117	11.720		514.799	514.761	23.51	23.44	33.15	33.19	
2	10	18.00	10	11	50	0	0	0.970	0.41	0.084	4.690		514.761	514.982	23.44	23.13	33.19	32.97	
2	11	55.00	11	12	50	0	0	0.480	0.20	0.069	1.250		514.982	513.919	23.13	24.12	32.97	34.03	
2	12	18.00	12	13	50	0	0	0.170	0.07	0.003	0.180		513.919	513.326	24.12	24.71	34.03	34.62	
2	13	55.00	13	14	50	0	0	-0.080	0.04	0.003	0.050		513.326	511.923	24.71	26.12	34.62	36.03	

Dados físicos da rede

Dados Gerais População, per capita, etc

Condicionantes hidráulicas

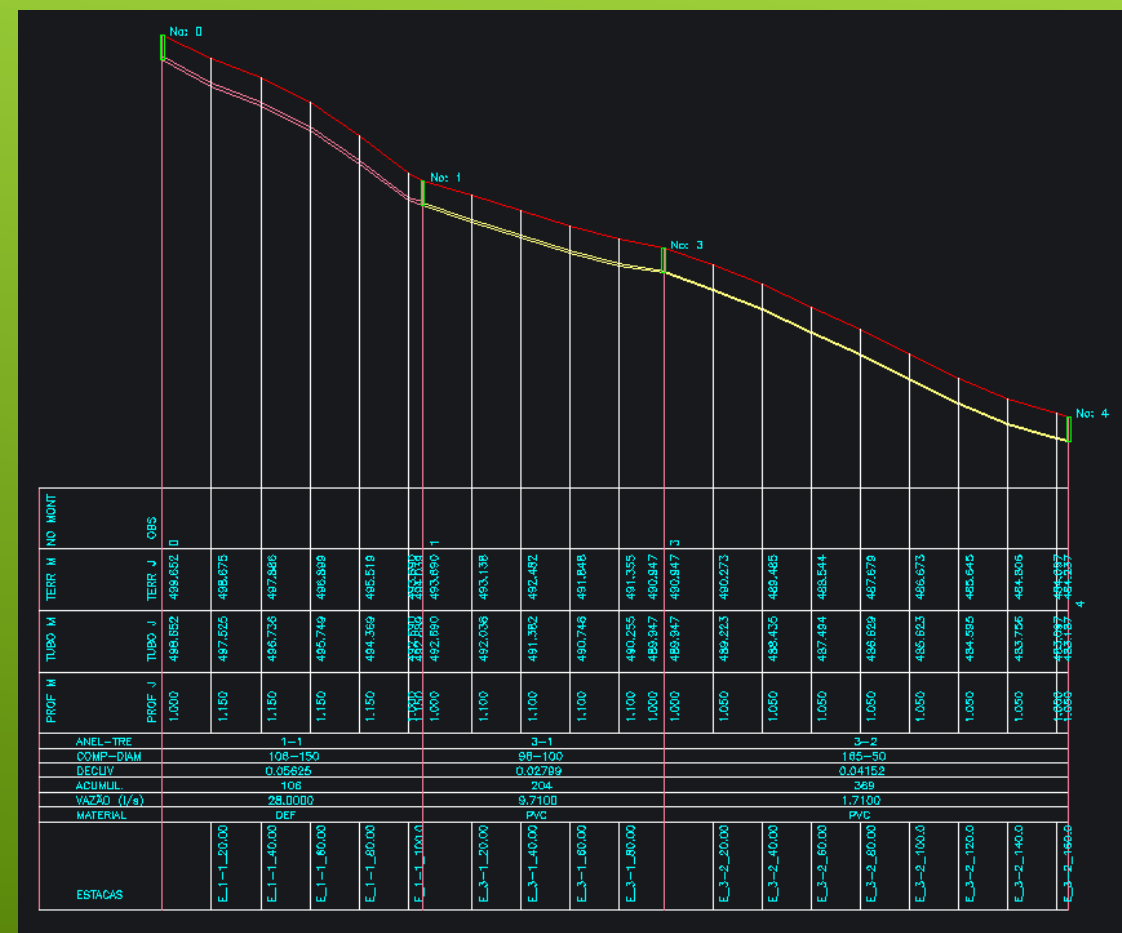
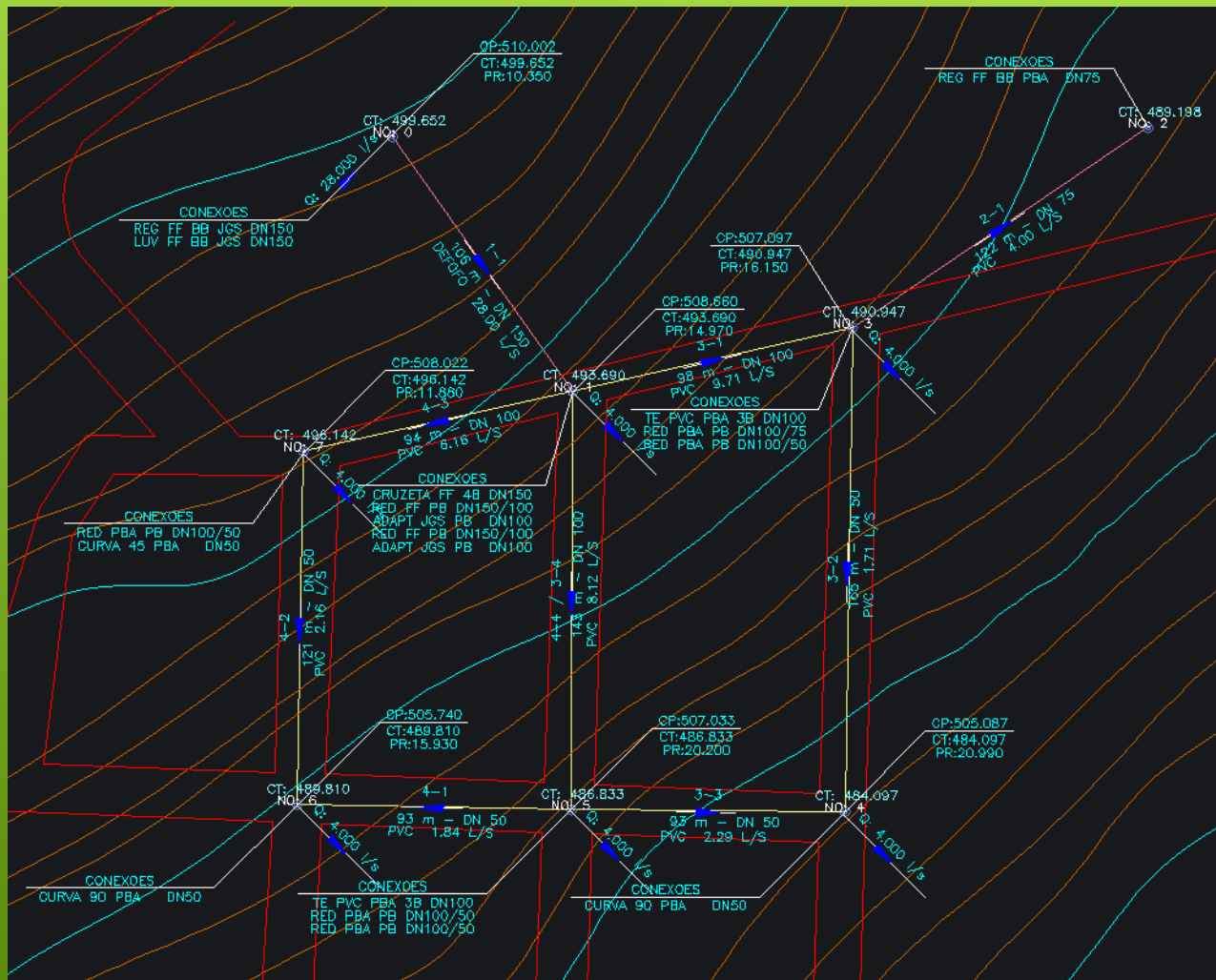
Planilhas de dimensionamento

Planta final

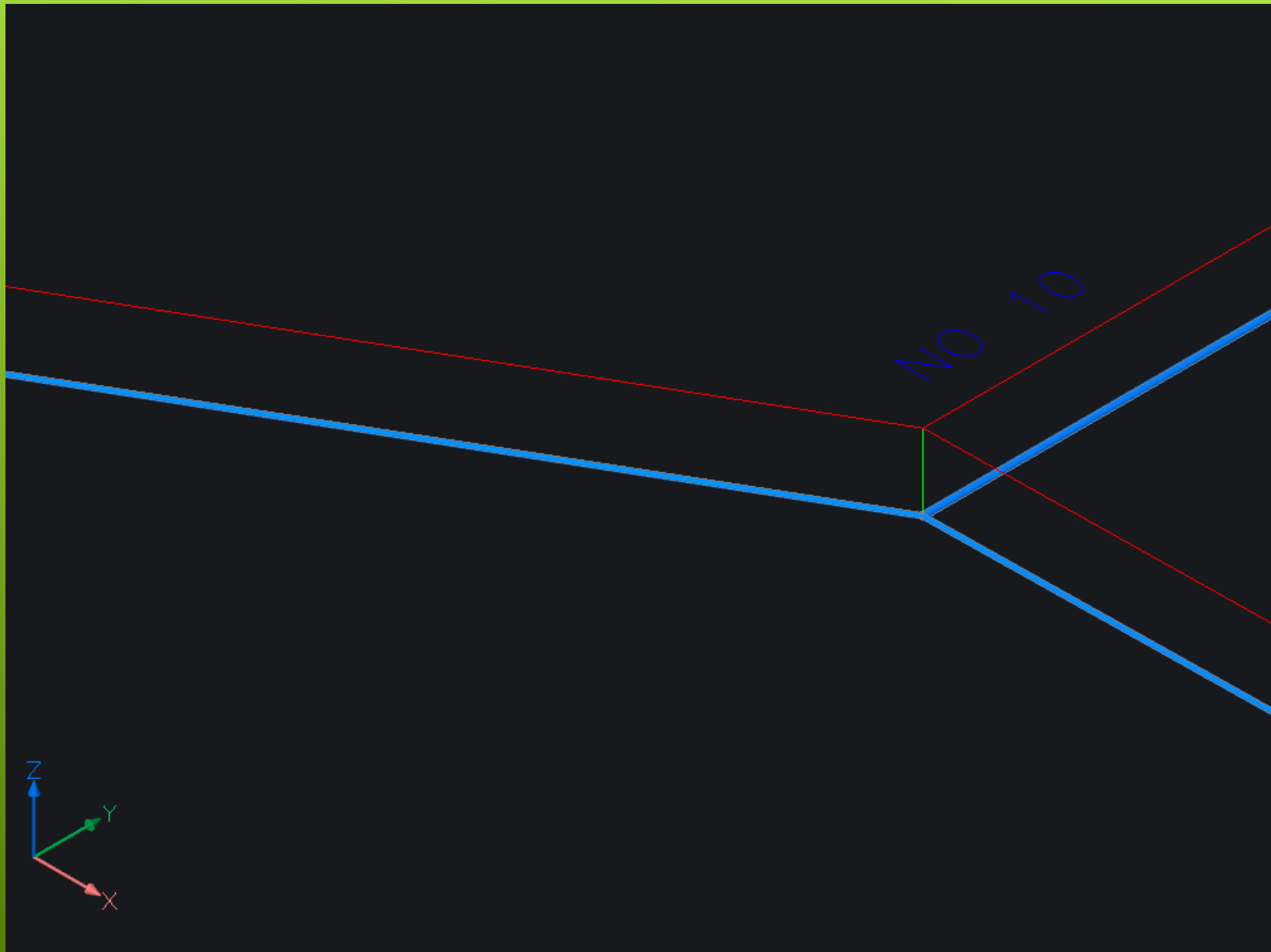
Perfis longitudinais

Quantitativos (N-BR-12266)

Planta e Perfis Longitudinais

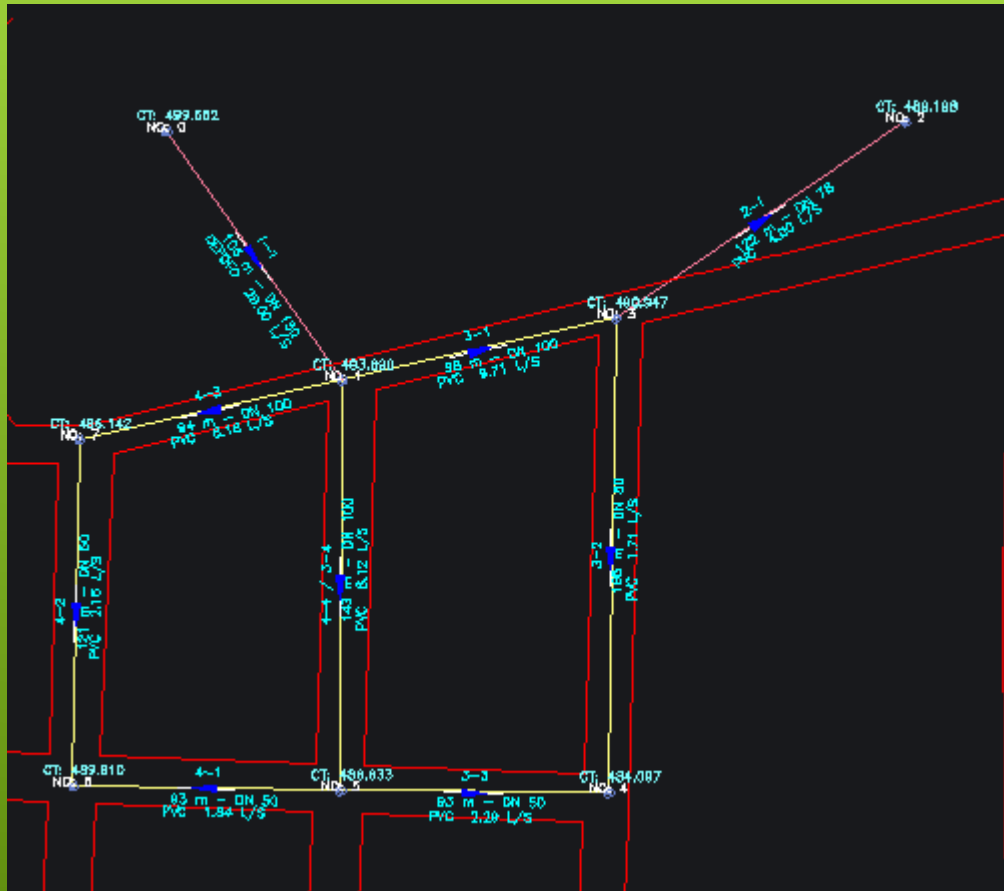


Exportação da rede projetada no AQUA REDE para representação 3D no CAD



Exportação do projeto do AQUA REDE para o software EPANET

Projeto no AQUA REDE



An official website of the United States government.

EPA United States Environmental Protection Agency

Environmental Topics Laws & Regulations About EPA Search EPA.gov

Related Topics: Water Research CONTACT US SHARE

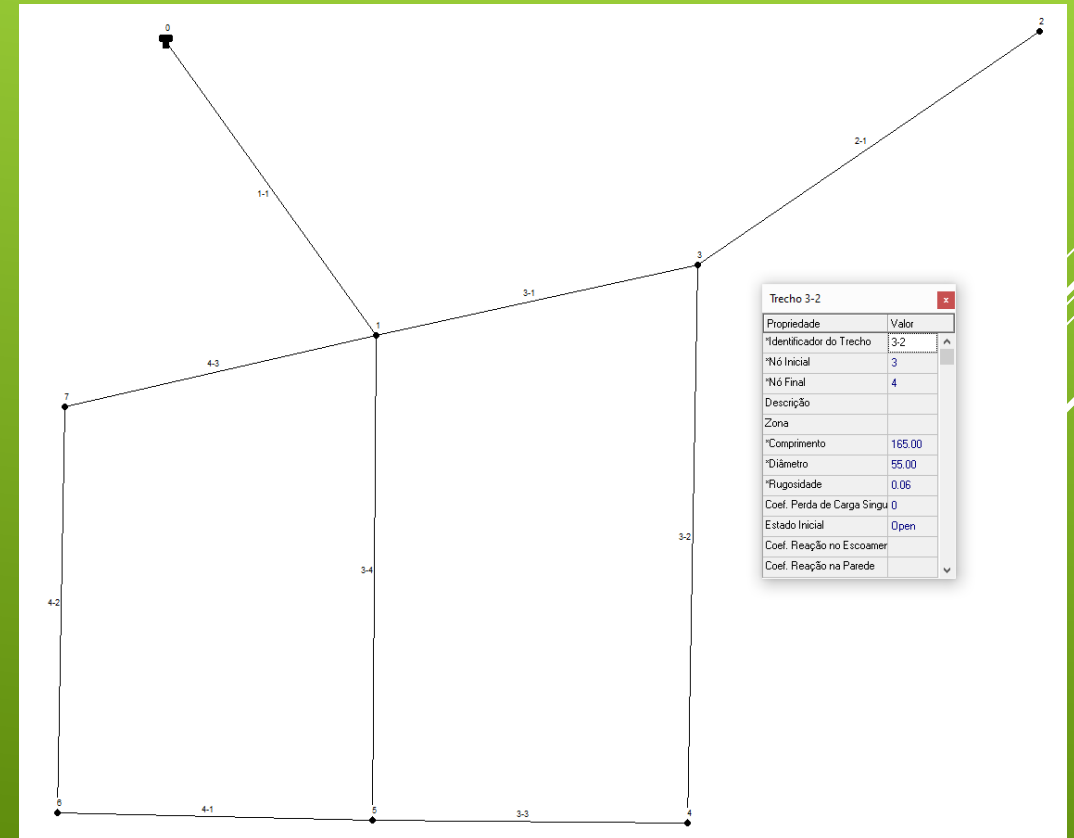
EPANET

Application for Modeling Drinking Water Distribution Systems

EPANET is a software application used throughout the world to model water distribution systems. It was developed as a tool for understanding the movement and fate of drinking water constituents within distribution systems, and can be used for many different types of applications in distribution systems analysis. Today, engineers and consultants use EPANET to design and size new water infrastructure, retrofit existing aging infrastructure, optimize operations of tanks and pumps, reduce energy usage, investigate water quality problems, and prepare for emergencies. It can also be used to model contamination threats and evaluate resilience to security threats or natural disasters.

On this Page

- [Software Compatibility and Manuals](#)
- [Capabilities](#)
- [Applications](#)
- [Related Resources](#)
- [Technical Support](#)



Mesmo projeto aberto no EPANET

Listagem automática de conexões por nó da rede

AQUA REDE 2020 - módulo: P0106PC

SANEGRAPH
SERVIÇOS DE INFORMÁTICA

Conexões por nó da rede de água

Lista Único

No	Peça 1	Peça 2	Peça 3	Peça 4	Peça 5
0	REG FF BB JGS DN150	LUV FF BB JGS DN150			
1	TE FF BOLSAS DN150	RED FF PB DN150/100	ADAPT JGS PB DN100	RED PBA PB DN100/50	
2	TE FF BOLSAS DN150	RED FF PB DN150/100	ADAPT JGS PB DN100	RED PBA PB DN100/50	
3	TE FF BOLSAS DN150	RED FF PB DN150/100	ADAPT JGS PB DN100	RED PBA PB DN100/50	
4	TE FF BOLSAS DN150	RED FF PB DN150/100	ADAPT JGS PB DN100	RED FF PB DN150/100	ADAPT JGS PB DN100
5	TE PVC PBA 3B DN100				
6	TE PVC PBA 3B DN100	RED PBA PB DN100/75	RED PBA PB DN100/75		
7	TE PVC PBA 3B DN75	RED PBA PB DN75/50	RED PBA PB DN75/50		
8	TE PVC PBA 3B DN50				
9	TE PVC PBA 3B DN50				
10	TE PVC PBA 3B DN50				
11	TE PVC PBA 3B DN50				

